



**PROVOST AND VICE PRESIDENT
FOR ACADEMIC AFFAIRS**

Paul W. Ludden

Assistant to the Provost
Carolyn Jeter

Associate Provost
Linda Eads

Associate Provost
Harold W. Stanley

**SMU-in-Plano Campus
Director**
Kate Livingston

**Dean of Edwin L. Cox
School of Business**
Albert W. Niemi Jr.

Dean of Dedman College
William M. Tsutsui

Dean of Lyle School of Engineering
Geoffrey C. Orsak

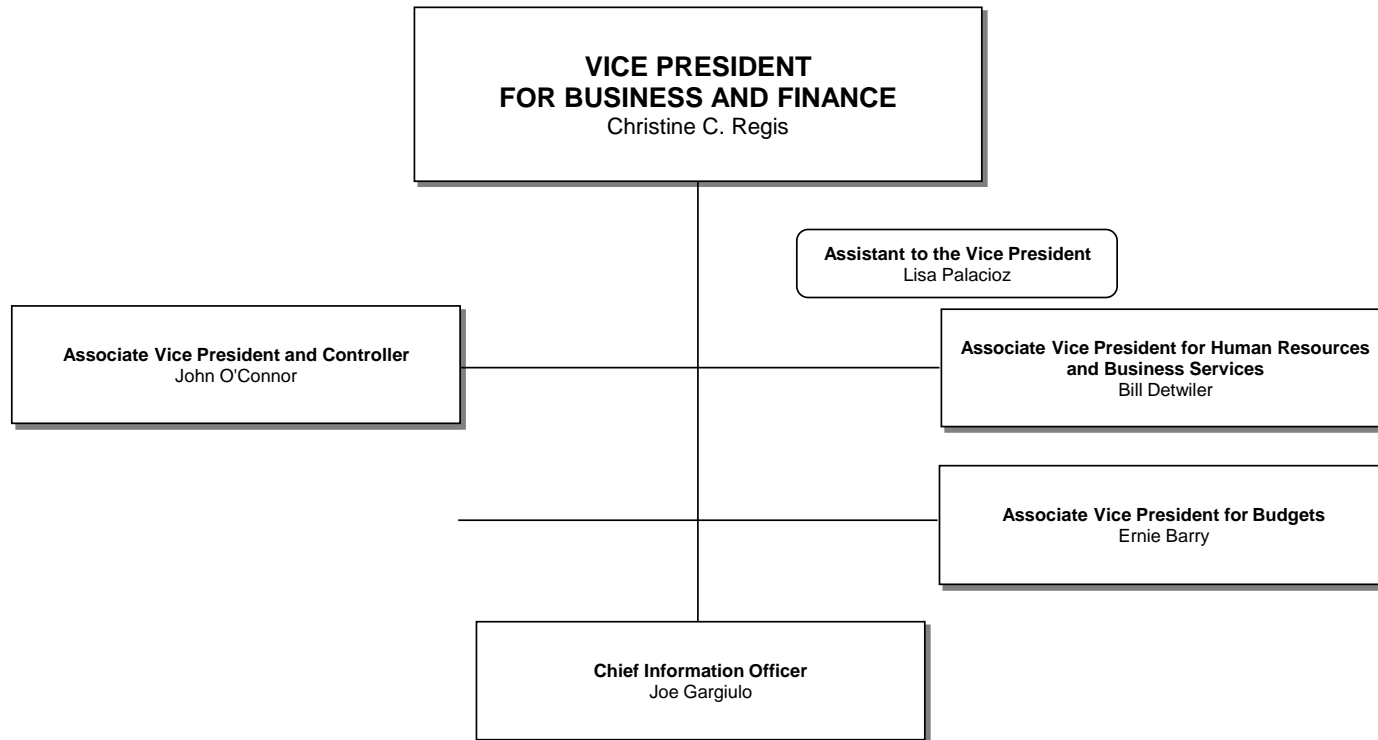
Dean of Meadows School of the Arts
José Antonio Bowen

**Dean of Annette Caldwell Simmons School of
Education
and Human Development**
David J. Chard

Dean of Dedman School of Law
John B. Attanasio

**Dean and Director,
Central University Libraries**
Gillian M. McCombs

Dean of Perkins School of Theology
William B. Lawrence





**GENERAL COUNSEL,
VICE PRESIDENT FOR LEGAL AFFAIRS
AND GOVERNMENT RELATIONS,**

