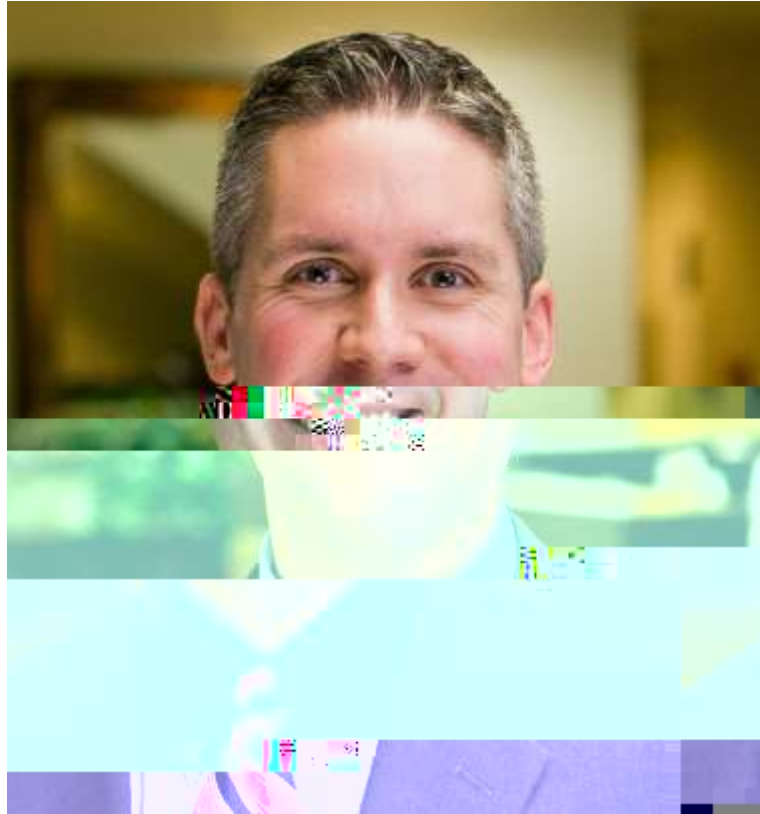


A collage of various images including a person's face, a person in a white coat, and abstract patterns.

# 2020 Regulations

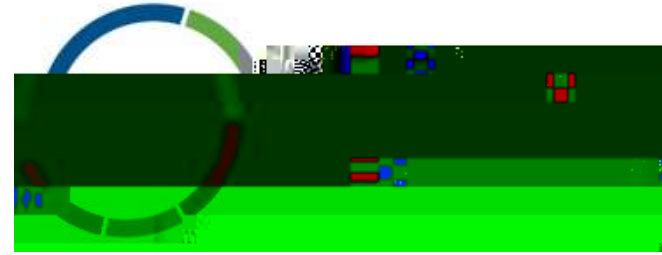


# Back to Campus - Back to Title IX: Confronting the Challenges of the 2020 Regulations



H O S T

Visit us on the web at [ELA.LAW](http://ELA.LAW)



JOSH SALSBUREY

Member  
Sturgill, Turner, Barker & Moloney



RESOURCES

REGISTER

LOGIN



FLA Employment...

ABOUT

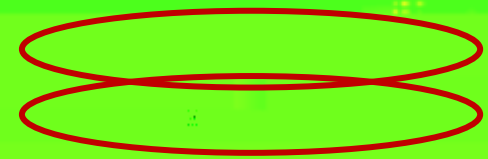
REGIONS

GLOBAL EMPLOYER

NEWS &

WEBINARS &

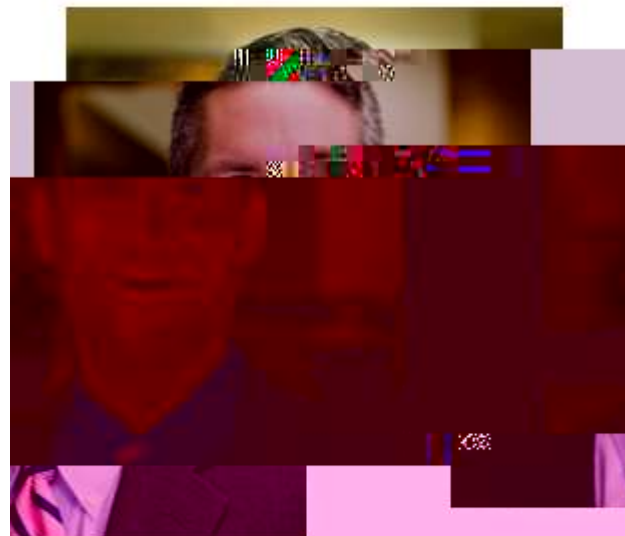
FIND A





A large video player area occupying the center of the page. The video content is heavily blurred, showing indistinct shapes and colors. The player includes standard interface elements like a play button, progress bar, and volume controls.

A vertical sidebar on the right side of the page. It features a series of navigation icons (home, search, etc.) and a video thumbnail showing a woman's face. Below the thumbnail, there is some text, possibly a title or description for the video.

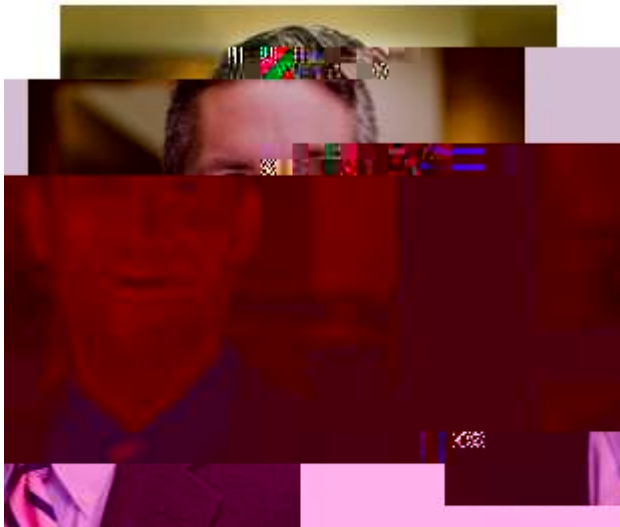


HOST

the web at ELA.LAW

Visit us on







OST

Visit us on the web at ELA.LAW

### Q&A

Welcome to Q&A

Questions you ask will show up here.  host and panelists will be  to see all questions.





*The ELA Presents*



**Event Resources**

Presentation Slides & Certificate of Attendance



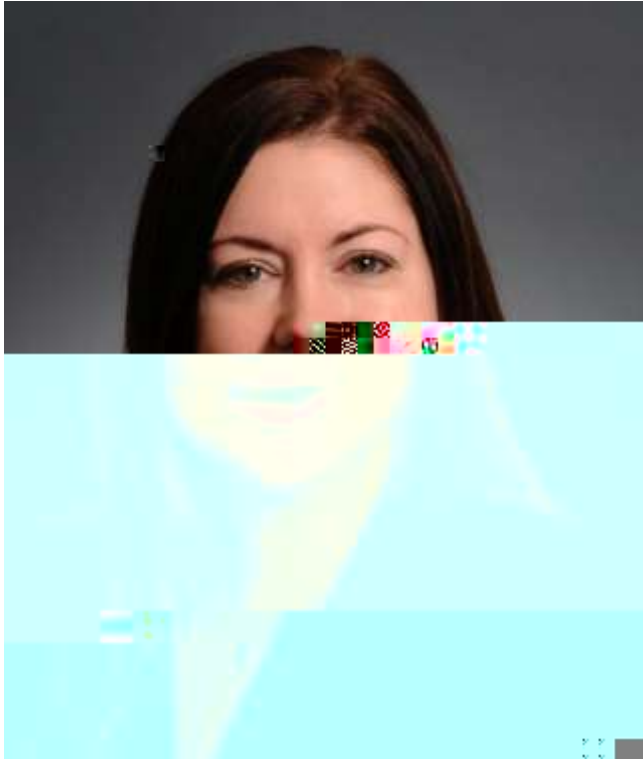
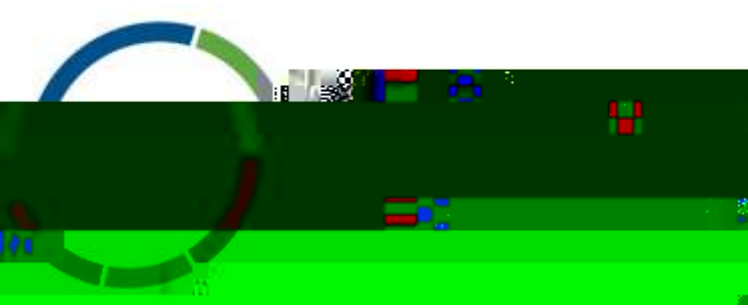
Resources provided by the speakers and their firms:



ELA Resources







MODERATOR

SUSAN DENIKER

Member

West Virginia

---



# Overview

---

[Back to Campus - Back to Title IX: Confronting the Challenges of the 2020 Regulations](#)

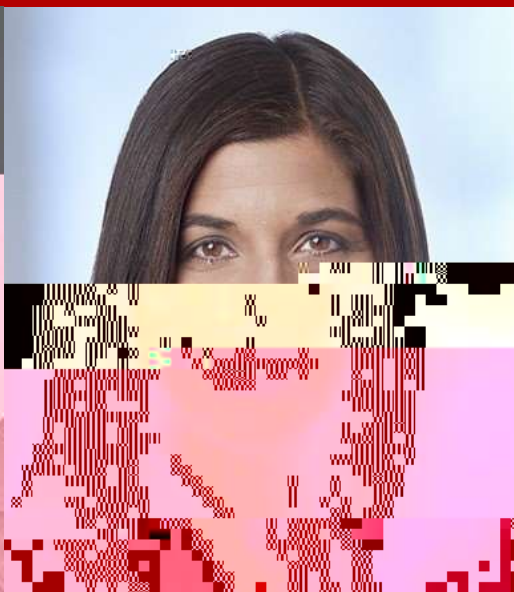
---

# Panelists



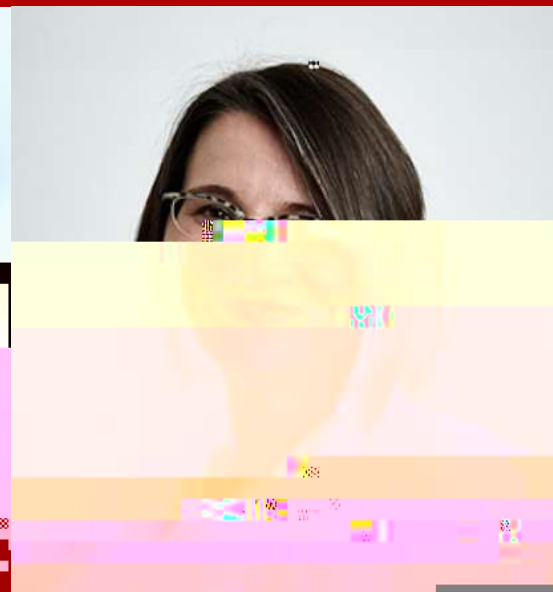
DEREK ISHIKAWA

California  
[dishikawa@hkemploymentlaw.com](mailto:dishikawa@hkemploymentlaw.com)



KATHRYN M. NASH

Minnesota  
[kathryn.nash@lathropgpm.com](mailto:kathryn.nash@lathropgpm.com)



KATE NASH

Missouri - Eastern  
[knash@tuethkeeney.com](mailto:knash@tuethkeeney.com)





Derek Ishikawa  
Attorney  
Hirschfeld





Derek Ishikawa

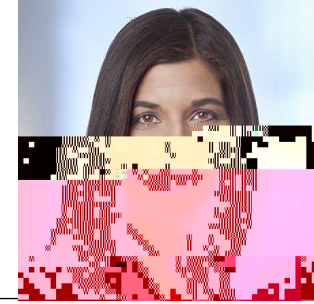


# Amending Notice of Allegations

---



# Access to Directly Related Evidence



Kathryn M. Nash  
Partner  
Lathrop GPM LLP  
Minnesota

# Changes Regarding “ Statements” Not Subject to Cross-Examination



Kate Nash  
Shareholder  
Tueth Keeney Cooper Mohan &  
Jackstadt, PC  
Missouri - Eastern

- 
- 
- 
-

Derek Ishikawa









The ELA Presents

# Back to Campus and Back to Title IX

Speakers

Moderator

Presenter

# Coming Up Next!

[Register today!](#)

September 29, 2021





Listen to the  
Employment  
Matters  
Podcast



# Continuing Education Credit



*The ELA Presents*



## Event Resources

Presentation Slides & Certificate of Attendance



Resources provided by the speakers and their firms:



ELA Resources

# Continuing Education Credit



This program is valid for **1.25** PDCs

Course Number: **21-4QTGY**

Visit [www.SHRMcertification.org](http://www.SHRMcertification.org) to submit PDCs

A **Certificate of Attendance** and supporting materials are available for download in the resources tab and will also be included in your follow-up materials sent via email. Attendees seeking continuing education credit should submit these materials directly to the appropriate organization.

