

The William P.

# CLEMENTS CENTER

## News from Co-Director Sherry L. Smith

The last day of class  
is one of my  
favorites. I find a

Established in fall 1996, the William P. Clements Center for Southwest Studies at Southern Methodist University promotes research by awarding grants and fellowships, supporting the publication of academic research, and providing public programming on fields of inquiry related to Texas the American Southwest and the U.S.-Mexico borderlands.

### Co-directors

Andrew R. Graybill  
agraybill@smu.edu

Sherry L. Smith  
sherrys@smu.edu

### Assistant Director

Ruth Ann Elmore  
raelmore@smu.edu

The William P. Clements Center  
for Southwest Studies  
3225 University Avenue  
Room 356  
Box 750176  
Dallas, TX 75275-0176  
214.768.3684  
Fax 214.768.4129  
swcenter@smu.edu  
www.smu.edu/swcenter





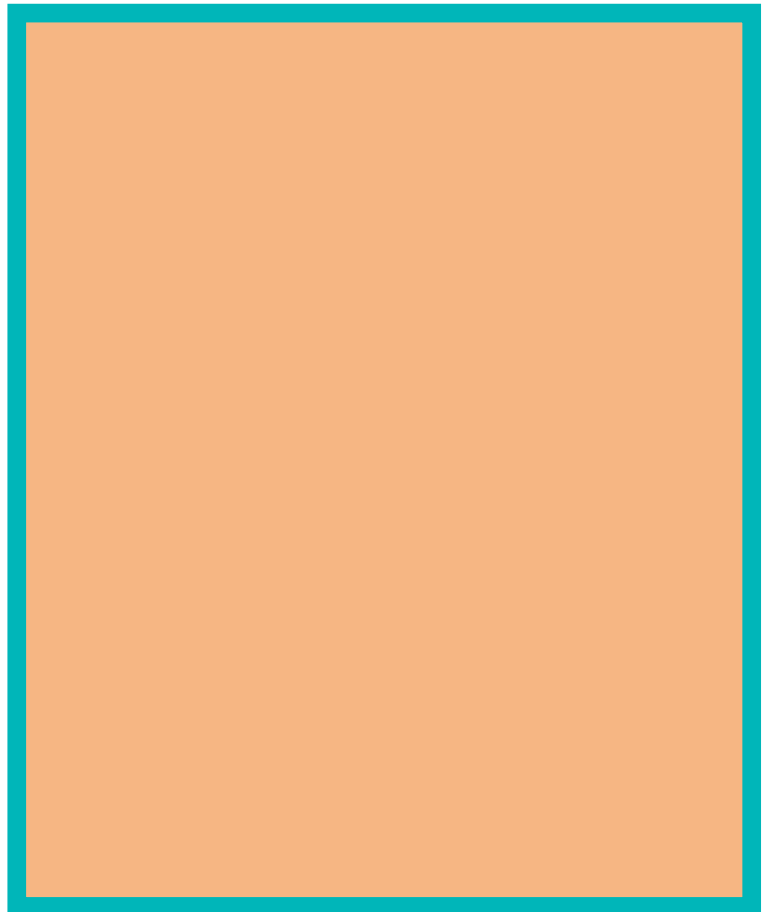
**Thomas Buckley** (Ph.D. student, Henley Business School, University of Reading, U.K.) [u](#) [h](#) [h](#) [o](#) [o](#) [k](#) [h](#) Thomas conducted research for his dissertation in the JC Penney company archives, searching for material on the key factors that affected the productivity of large-scale retail firms operating in Great Britain between 1945-1980. He sought to identify the most important

developments that occur within retail firms and then to measure the effects those factors had on the firm's growth. [@](#) [K#](#) [h](#) [@U](#)

**Francesco** (Ph.D., History of Science, University of Bari, Italy) [u](#) [h](#) [h](#) [o](#) [o](#) [k](#) [h](#) Last summer while at the University of Oklahoma on a Mellon fellowship, Francesco visited the DeGolyer Library to research the Mexican oil industry in the 19

publications @ *M h t o*

Ty Welborn (Ph.D. student, University of Houston) *o u #*  
k *O U o* During the



1. Clements Center board member **Ron Tyler** recently received the CASETA (Center for the Advancement of Early Texas Art) 2014 Lifetime Achievement Award, presented to an individual who has distinguished himself or herself with a lifetime of involvement with Texas art as either an artist, a patron, a collector, or a scholar.

2. SMU Professor of Anthropology, Director of the SMU-in-Taos campus, and Clements Center Advisory panel member **Mike Adler** leads members of Clements Center's "Food Across Borders" symposium on a tour of the Pot Creek Pueblo archaeological site last fall at the SMU-in-Taos campus.

3. The Clements Center and their families went bowling with some elves during the holiday season.

4. At ending Clements fellow) **U** manuscript workshop last fall were (first row): **V 7 8 "** **K o o o** ; (second row): **h 7 U M - # 'k &**

A

"

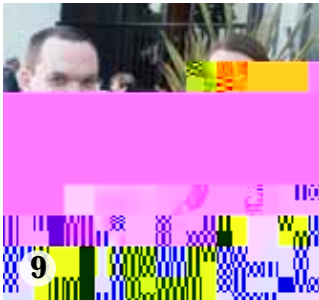
A k ! "

# Announcing the Weber-Clements Prize and Finalists

The 2014 Weber-Clements Prize for the Best Non-fiction Book on Southwestern America will be awarded to



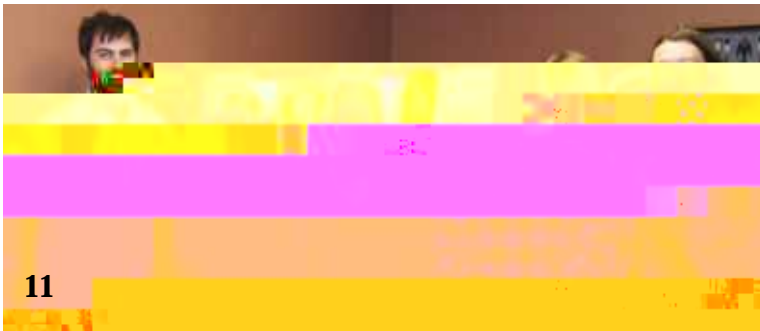
8



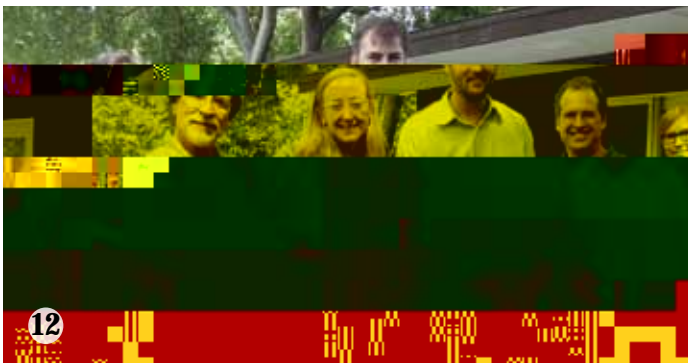
9



10



11



12

11. Clements Center fellows **8** " k o K " \ and **Doug Miller** say good-bye to o O on the last day before his return home to the University of Oulu, Finland.

12. **Bill Childs** (emeritus, Ohio State University), **K** \ (the New School), the Clements Center's Summerlee Fellow for Texas History **8** " # # (California State University-Sacramento), and = **M** (Tarleton State University) at Gavin's manuscript workshop last fall.



Southern Methodist University  
William P. Clements Center for Southwest Studies  
PO Box 750176  
Dallas, TX 75275-0176

## SPRING 2015 EVENT CALENDAR

QyV#=#u@ - 'u' OM  
Wednesday, January 28, 2015