

# Bridwell Institute

2022-23 Annual Report

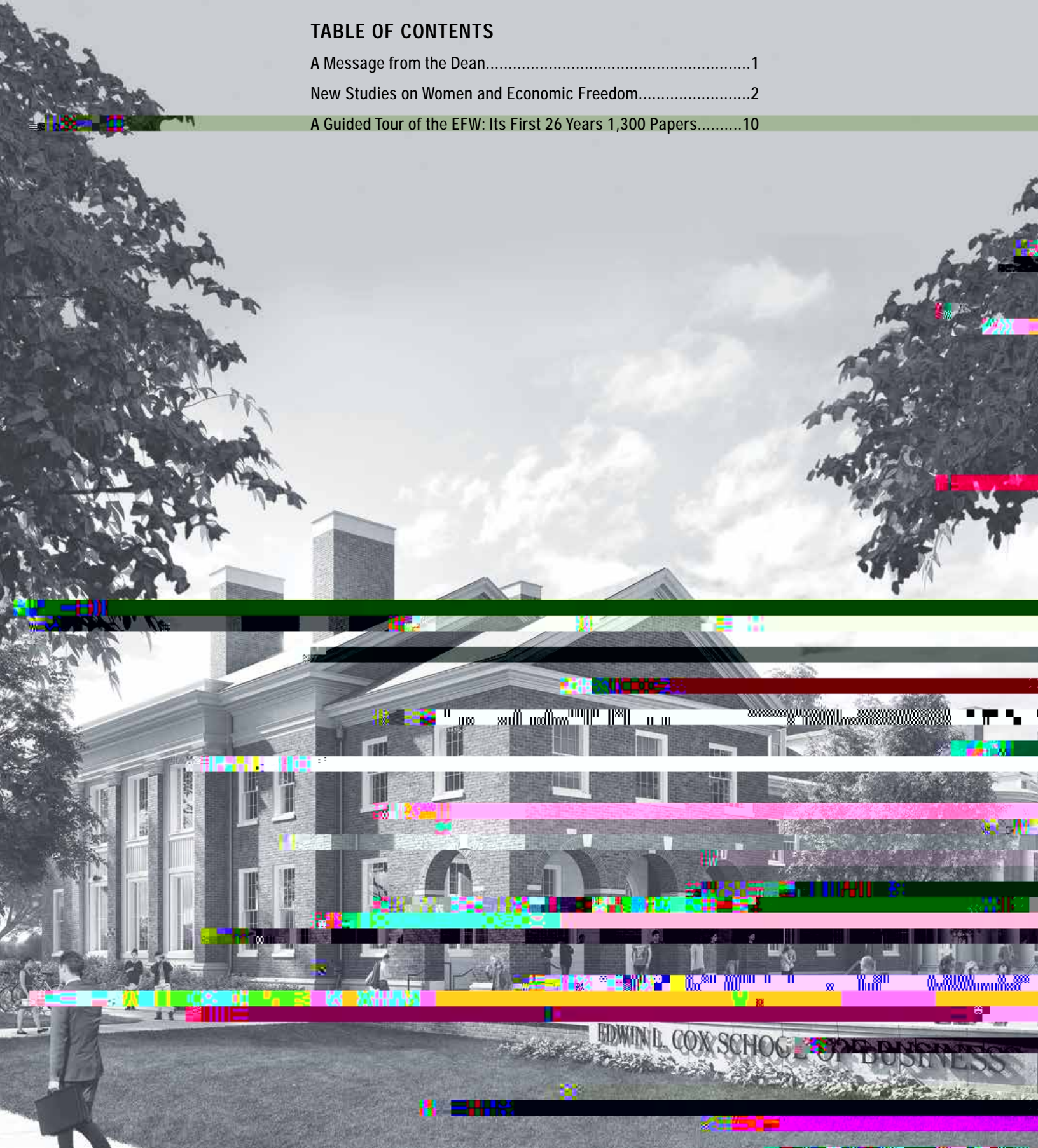
**Spotlight  
on**

Bridwell Institute for Economic Freedom

SMU Cox School of Business

## TABLE OF CONTENTS

A Message from the Dean.....	1
New Studies on Women and Economic Freedom.....	2
A Guided Tour of the EFW: Its First 26 Years 1,300 Papers.....	10



T

,

T

T ☒

,

☒



---

## Tweaking the EFW to Recognize Women's Realities

In the 2017 EFW report, Fike introduced the Gender Disparity Index (GDI) to measure formal legal discrimination against women.

It uses 41 separate indicators from the World Bank's Women, Business and the Law dataset, which details various legal and regulatory barriers women face. The GDI was the basis for adjustments to the EFW index's Area 2 Legal System and Property Rights component.

Countries with no gender disparity see no change to their Area 2 score, while countries with significant gender disparity see a significantly lower score. The Fike adjustment allows researchers using the EFW index to better assess the role gender plays in economic outcomes.

---

10.



Rosemarie Fike  
Claudia Williamson Kramer



On Children and Families

( ) ( )

T

T

⊗

⊗

1 -1

(T

T

T

T

T

2.

T

se f... f.e. T

se,

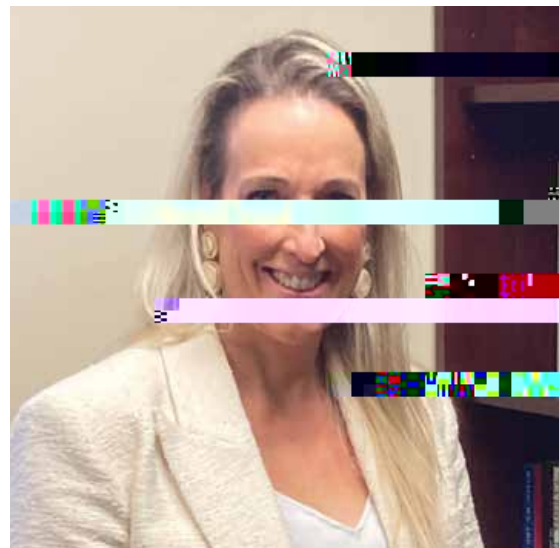
as

T

...  
- Ec ic  
F eed N , A e ic

, 1

10



.T







201

1

(see page 8).

T

' 200

( G ),

T

)

T

T 1

T

## Notes and References

T Economic Freedom, see // 201 Economic Freedom, see // -202 -201-

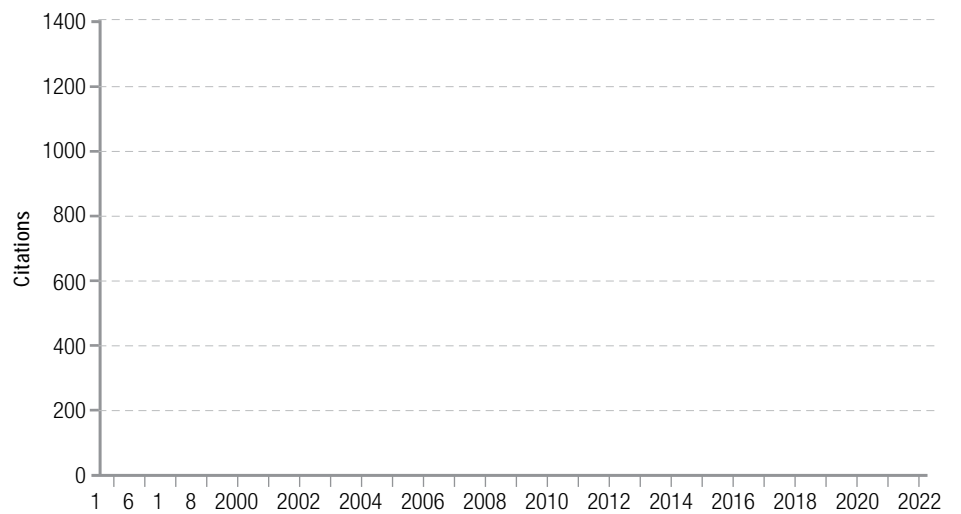
T Economic Freedom, N. A. // -2022. G ( ) //

// //

(1) 11 . J g Raj g A g i

## EXHIBIT 1

Cumulative Citations of the EFW Index, 1996 to April 2022



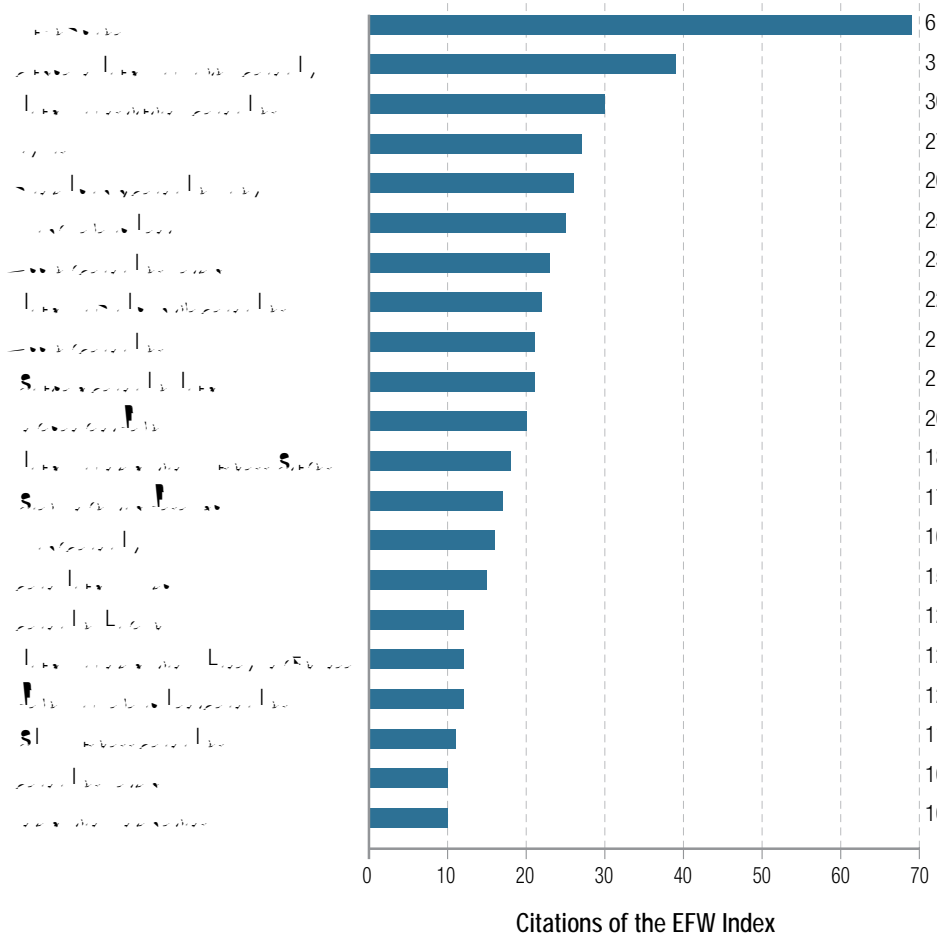
Research in the field of  
International Business

Management (BBA) is  
a discipline that deals with  
the business operations of  
a company.

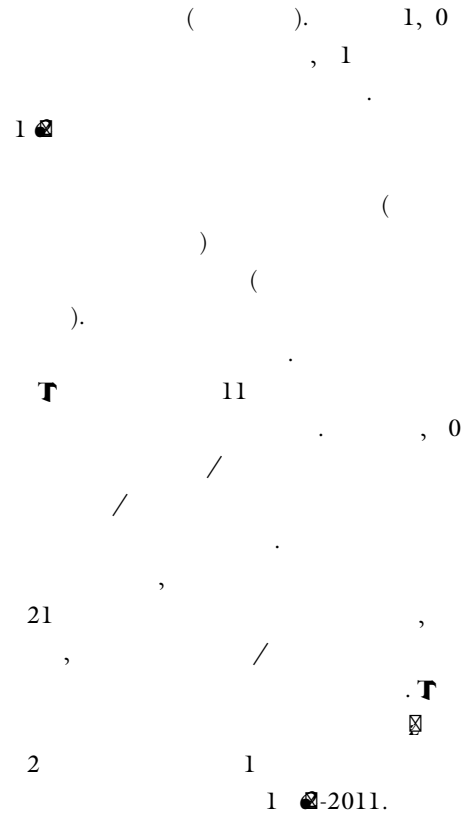


### EXHIBIT 3

Journals with the Most Citations of the EFW Index

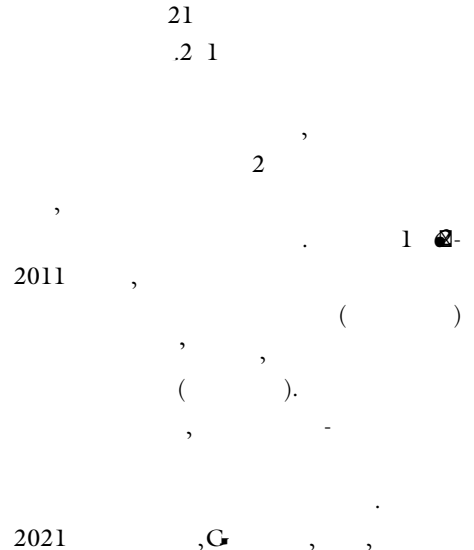
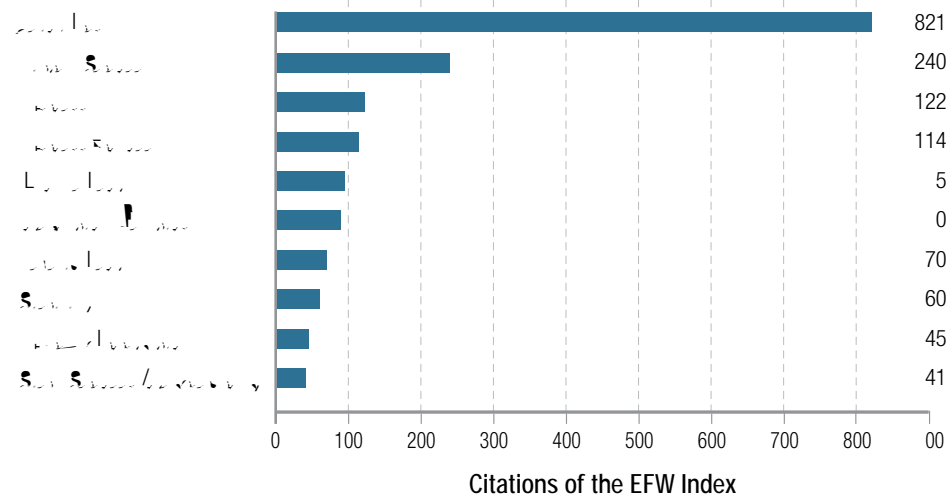


How Researchers Use EFW



### EXHIBIT 4

Most Popular Fields Citing the EFW Index









*Conflict.* ¶

*Corruption and shadow economy.*

¶

*Entrepreneurship and innovation.*

¶

*Environmental outcomes.* ¶

# EXHIBIT 10

## Normative Outcomes by use of EFW Index 2022

Normative Outcomes by use of EFW Index 2022

See, J Economic

10, 20, 11, 20, 21-

### Why Good Outcomes Fell

201, 1, 1

0

(2, 21-

|

---

## Notes and References

# Bridwell Institute

2022-23 Annual Report

---

T

2022-23 Annual Report

10 ( ) 0.2 T 0 -1. T T )-10

10 ( ) 0.2 T 0 -1. T T )-

# Bridwell Institute Faculty and Staff, 2022-23



*Robert Lawson*



*Meg Tuszynski*



*W. Michael Cox*



*Richard Alm*



*Dean Stansel*



*Ryan Murphy*



*Liz Chow*



*Ray Hughel*



*Ann Marie Tipps*



*Michael Davis*



*Albert W. Niemi*



---

G

---

---

# Gender Equality Research Studies Tackle Topic of Women and Economic Freedom

**T**he World Economic Forum's Gender Equality Research Index (GERI) has ranked India 100th in the world for the 11th year in a row, according to a report released on Monday. The index measures the extent to which women and men have equal opportunities in economic, political, and social spheres.

The report, titled 'Global Gender Equality Research Index 2022 (Executive Summary)', shows that India's score has remained stable at 100. The index is based on 15 indicators across three domains: Economic (40%), Political (30%), and Social (30%). India's score in the Economic domain is 100, in the Political domain is 100, and in the Social domain is 100.

**T**he report also highlights that India's score in the Economic domain has improved from 99 in 2021-22 to 100 in 2022-23. This is due to the increase in the score of the indicator 'Economic Freedom' from 99 to 100.

The report also notes that India's score in the Political domain has improved from 99 to 100, and in the Social domain from 99 to 100.

**Researcher** T. S. Ramarao, Director of the Centre for Economic Studies, has led the research team. The report is available at <https://www.weforum.org/research/gender-equality-research-index-2022>.

awar sn-/GS1 gs d





T

(2022),

T

10

-1. T T T T

1

( ), 0(T 0

D CEO

T T

T

T

( )

T

A e i c y B i e J

G g R g i d

2021-22

J g E c i c g S c i a .

T A , i A e i c y - S g e g

T  
J e H i .

. G

T

T

T

I e I e g i g R e g i C y i i g 2 0% 0

g e g i M e i c g d . e d

202 ,

D y i C y e , T

T

T T

( ) .

T O g a s e C , R a i s e

T

T

T

T D y g M i a , N e

T

T

T



---

*Leticia, Free Enterprise*  
**Educating the Educators to Fight Economic Illiteracy**

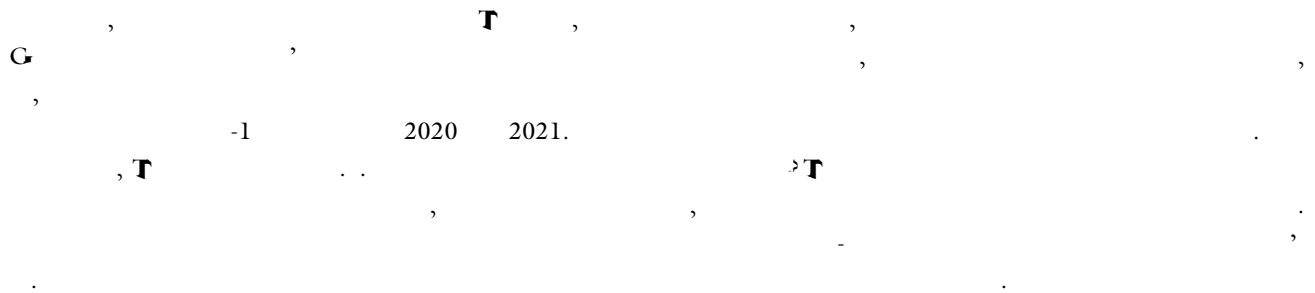
---

**Teaching and Mentoring**

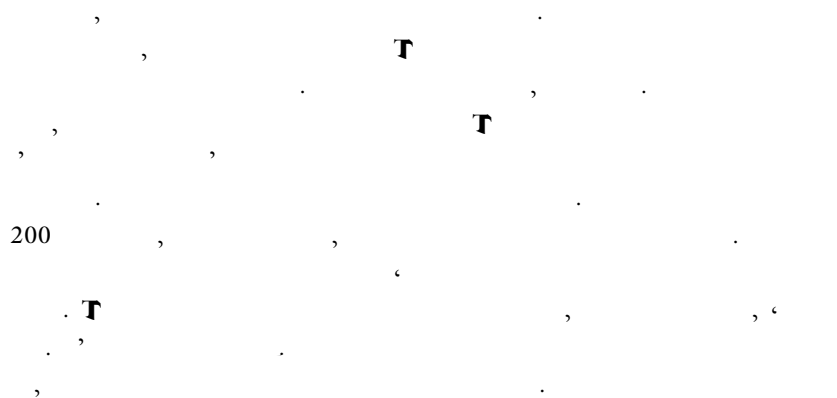
**T**

**T**

*Friction & Free Science Series*  
**U.S. Pandemic Policy: Failures, Successes and Lessons**



**The Unconventional Wisdom of Economics**

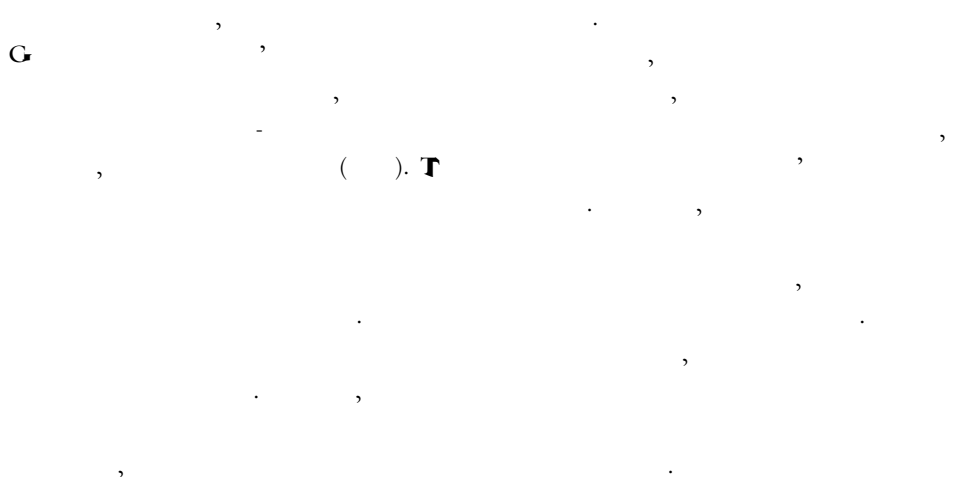


Steve Landsburg

**The Diversity-Equity-Inclusion Dilemma**



Jason Brennan



201 , T G , G T ;  
-1 , , T ;  
, T T , ,  
10 T ;  
T , , ,  
T .

## **When the Media Call, the Bridwell Institute Answers**

Cox SMU



0

, T 2 -0

/ -

21 . 210



n\_o\_s n n n \_o \_o v \_a h \_s\_s\_o , \_oq \_a,n \_a \_o n, \_s , , \_s , n n\_o \_a,  
v n\_s u\_s\_s u \_o n \_a, \_o n n n \_s\_s\_a. h u v \_o\_o \_s\_s n u / l \_oo n\_o\_s  
\_s n \_o n n u \_s n n a \_s n \_a \_o \_s n h h n\_s n\_s \_a u n , \_oo 204,  
6425 \_o n , \_s 75205,214-768-3601, \_s\_s u \_s u. u.