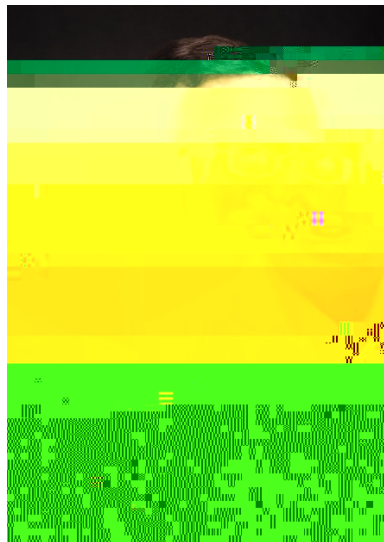




## Engineering Management, Information, and Systems Seminar Series

Research Seminar

Limited-Trust Equilibrium and Social Network Games\*



Dr. Rakesh Nagi  
Willett Professor in Engineering  
Department of Industrial and Enterprise Systems Engineering,  
Affiliate Faculty: ECE, CS, Coordinated Science Lab, Computational Sc.  
and Eng. University of Illinois at Urbana-Champaign

Friday, January 29 2021  
11:00 a.m. – 12:15 p.m.

Zoom link: <https://smu.zoom.us/j/96580795331>



easily improve net utility by as much as 14.5%. If only one agent exhibits modest trust among self-centered ones, it can increase its average utility by up to 25% in certain cases! Second, and counter-intuitively, when partnership opportunities are abundant agents become less trustworthy.

**Keywords:**Game Theory; Limited-Trust; Reciprocity; Long-term interactions; Social Networks; Partner Selection.

\*Joint work with Tim Murray, PhD student, and Prof. Jugal Garg, ISE@UIUC

**Biography** Rakesh Nagi is Donald Biggar Willett Professor of Engineering at the University of Illinois, Urbana-Champaign. He is also a senior research advisor at the Center for Advanced Study in Engineering, Science, and Technology (CAST) at the University of Illinois, Urbana-Champaign. He received his B.S. in Mechanical Engineering from the University of Illinois, Urbana-Champaign in 1991, his M.S. in Mechanical Engineering from the University of Illinois, Urbana-Champaign in 1993, and his Ph.D. in Mechanical Engineering from the University of Illinois, Urbana-Champaign in 1996. He worked for General Motors for 10 years, where he was a senior research advisor at the GM Research Laboratories in Warren, Michigan. He joined the University of Illinois in 2000. He is currently a senior research advisor at the Center for Advanced Study in Engineering, Science, and Technology (CAST) at the University of Illinois, Urbana-Champaign. He is also a senior research advisor at the Center for Advanced Study in Engineering, Science, and Technology (CAST) at the University of Illinois, Urbana-Champaign. He is currently a senior research advisor at the Center for Advanced Study in Engineering, Science, and Technology (CAST) at the University of Illinois, Urbana-Champaign. He is also a senior research advisor at the Center for Advanced Study in Engineering, Science, and Technology (CAST) at the University of Illinois, Urbana-Champaign.

First of Buffalo's "40 under Forty" award (2004), SME's Milton C. Shaw