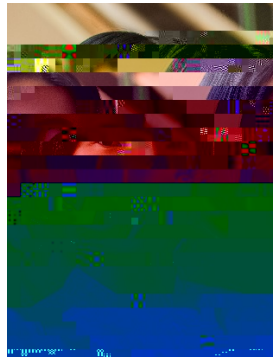




Research Seminar

## A Scale Invariant Approach for Signal and Image Recovery



Dr. Yifei Lou  
Associate Professor  
Mathematical Sciences Department  
University of Texas Dallas

Friday, February 26, 2021  
11:00 a.m. – 12:15 p.m.

**Zoom link: <https://smu.zoom.us/j/95095343594>**

**Abstract:** I will talk about the ratio of the  $L_1$  and  $L_2$  norms, denoted as  $L_1/L_2$ , to promote sparsity. Due to the non-convexity and non-linearity, there has been little attention to this scale-invariant model. Compared to popular models in the literature such as the  $L_p$  model for  $p \in (0, 1)$  and the transformed  $L_1$  (TL1), this ratio

model is